



GRADUATE ALUMNI NEWSLETTER

Greetings from Paul



Welcome to 2008!

I enjoy receiving e-mails from you that update your professional and personal lives. I recently heard from Michael Allen whose thesis I chaired in 1974. He is now chair of the Ole Miss Psychology Department (more about Michael and his family on page 9). The Psychology Graduate Student Organization (PGSO) continues to raise funds to support graduate student travel and research through their coffee and light snack stand. Through your generous donations to the Department we continue to provide considerable support to both undergraduate and graduate student research. Approximately \$6,500 is awarded to support the professional development of promising undergraduate and graduate students each year. More recently, the Donna Jane Clark

(Continued on page 10)

News

Welcome New Faculty.....2

Faculty search update.....2

University Teaching Awards.....5

Grad Coordinator5

International News.....8

Endowed Chair.....8

Alumni Highlight.....9

Baby pictures!.....10

Meet our Administrative Staff

Carol Anderson is our newest administrative assistant. Carol has been a staff person at Appalachian beginning in August 2000. She has worked as an office assistant and administrative assistant in the Art Department prior to coming to Psychology. When not at work, she spends time with her husband of 25 years and three teenage daughters. Carol likes to read, camp, and spend time with her very large extended family. Gail Day is our fearless office assistant. She has worked in the main office of the Psychology Department for six years. When not at the Psychology Department, Gail enjoys reading and gardening at her home in Ashe County. Gail owns property in Wyoming, so when she is on vacation, Gail heads west for as long as possible.



Graduate Program Updates

Check out the Program Updates!

Clinical Health.....3

General Experimental.....4

I/O and HRM.....6

School.....7

Psychology Department Welcomes New Faculty



Dr. Jamie Fearrington received her Ph.D. in School Psychology from the University of Tennessee, Knoxville in 2004. Prior to joining our faculty, Dr. Fearrington worked in the public schools outside Knoxville, TN for three years. She also served as adjunct faculty at the University of TN. Her research interests include the identification of empirically supported reading programs, research-based academic and behavioral interventions in school settings, and prevention of academic failure. She is currently studying curriculum-based assessments, focusing on measurement issues and gender differences. She and her husband Matt live outside Boone with their dog, Daisy, and cat, Georgia. In her free time, Dr. Fearrington enjoys cooking, hiking, reading, and watching college football.

Dr. Will Canu received his Ph.D. in Clinical Psychology from The University of Texas at Austin in 2004, following the completion of his pre-doctoral child clinical internship at SUNY Upstate Medical University in Syracuse, NY. Dr. Canu served as a faculty member at the University of Missouri-Rolla for three years before joining our Clinical-Health Program in August. His program of research focuses on Attention-Deficit/Hyperactivity Disorder (ADHD), particularly the outcomes of adults diagnosed with this disorder. Dr. Canu has recently completed studies examining the romantic outcomes of college men with ADHD and social stigma associated with the disorder. In his down time, he enjoys spending time with his wife, Rebekah, and son, Owen, playing in the outdoors, listening to music, watching good movies, making (and eating!) good food, and reading.



Faculty searches

The Psychology Department faculty were busy this past winter with five departmental searches, all of which ended with wonderful additions to our department. Our new Kulych-Clyne Endowed Chair is Dr. Scotty Hargrove who is a specialist in rural mental health. Dr. Shawn Bergman, a U.T. alumnus, will join the I/O-HRM program. Dr. Lisa Emery, a developmental psychologist, earned her doctorate at Washington University (St. Louis) and has completed a two year postdoctoral internship at North Carolina State University. She will join the General/Experimental department. Faculty are currently reviewing applicants to fill a position in cognitive psychology. In the next newsletter, we will provide you with more details about the newest members of our family.

Clinical Psychology continues to be a strong graduate program in psychology at ASU. Last fall the program admitted 8 students with an average GRE score of 1195, one from Japan, 3 others from out of state, and 2 who are men. Last year we had 7/7 graduates pass the National Psychology Licensure Exam, most at the doctoral level. Congratulations for your hard work preparing!

The Psychology Dept. faculty has elected to seek permission to extend graduate training in Clinical Psychology to offer a Ph.D. degree. The faculty has worked hard to develop a program and Ph.D. curriculum, and is seeking approval at the university level this year.

Students continue to complete practicum training frequently at the ASU Counseling Center and the Psychology Clinic. The Psychology Clinic now typically hosts 2 practicum students and 1 Intern, performing many assessments each semester. The Psychology Clinic will be relocated to the new Institute for Health and Human Services (IHHS) next fall (pending completion of renovations), which will be located at the old University Hall. The new IHHS has tapped 2 of our Clinical faculty for administrative roles: Dr. Lisa Curtin is Associate Director of Research, and Dr. Kurt Michael is Associate Director of Clinical Services. The new Institute has strong potential to extend clinical training and research opportunities for our students in a cross disciplinary community clinic as the facility comes online next

year. For more about this facility see: <http://www.ihhs.appstate.edu/>

Dr. Schneider has elected to phase down to part-time supervision at the Psychology Clinic for the next several years, and that has led Dr. Broman-Fulks to increase his role in supervision and administration of the Psychology Clinic. Dr. Broman-Folks, who is now in his 3rd year at ASU, continues research in anxiety sensitivity, taximetrics, and exercise. He has been markedly productive as a scholar.

Dr. Courtney Rocheleau who also joined the ASU faculty several years ago with a strong interest in health psychology continues research in the psychology of organ donation and the promotion of regular exercise and physical activity. She has also been particularly interested in the philosophy and content of the undergraduate psychology curricula, and participates in an APA national commission to develop guidelines and recommendations on curriculum.

Dr. Michael is Co-PI on a federal grant (\$63,954, Center for Substance Abuse Prevention) with Dr. Lisa Curtin to conduct a community needs assessment to inform future efforts to reduce alcohol-related crashes and fatalities in Watauga County as part of a state priority area identified by the North Carolina Strategic Prevention Framework. The grant currently funds two graduate students in psychology.



Pictured left is the most recent cohort of Clinical-Health graduate students. Back-left and clockwise: Holly Misky, Simon Wullimann, Cameron Massey, Kara Visser, Alana Biggs, Akiko Tamamura, Linsey Tabor, Kathrin Ritter.

General Experimental, Doris Bazzini, Program Director

The General/Experimental program is thriving and the faculty and students are enjoying getting to know one another during the weekly seminars held on Friday afternoons. Each week either a faculty member or student presents their research or topic of interest for the entire group. For instance, Dr. Rose Mary Webb facilitated a lively discussion when she shared findings from a recent study on gender differences in valuing the work/life balance using a sample of academicians. The seminar series has been a good way to bring faculty and students together to discuss the exciting research being conducted in the various labs.

On another note, this year the General/Experimental faculty lost two faculty members who decided to continue their professional endeavors at Doctoral-level programs. Dr. Dayna Touron is now an assistant professor at the University of NC at Greensboro, and Dr. Greg Reynolds is now an assistant professor at the University of Tennessee in Knoxville. They will be missed, but luckily they are not too far away and we're hopeful that they will make occasional visits.

Most of our current students were Appalachian undergraduates, including: Gordon Harless, Dominic Mascari, Cassie Black, Jacob Conrad, JoAnna Klein,

Lucinda Payne, and Anna Petroff. In addition, we have Amy Barwick (Winthrop University) and Tim Pruett (Radford University). Recent graduate, Myra Robinson, is living in Winston-Salem as a strategic planner for a Marketing-to-Women advertising agency called Frank About Women.

Faculty Research Highlights

Dr. Verne Bacharach and former faculty member Dr. Mike Furr, recently authored a textbook called *Psychometrics: An Introduction*. The presentation of material focuses on a conceptual understanding of psychometric issues, such as validity and reliability, and on purpose rather than procedure, the "why" rather than the "how to." They hope to introduce psychometric principles at a level that is more focused than found in introductory testing and measurement texts.

Dr. Doris Bazzini and Appalachian Alumni, Elizabeth Ray Strack (Clinical Graduate), Penny Deluca Martinicin (I/O Graduate), and Carmen Pyles Davis (Undergraduate Alumnus) published a study in the journal, *Motivation and Emotion*, regarding the positive influence of reminiscing about shared laughter for romantic couples. The study received coverage by the popular press, including Prevention, Men's Health, reNew, Shape, Ladies Home Journal, Self, and Woman's World.

Congratulations to Stephanie Squires (advised by Dr. Verne Bacharach) for winning the graduate school's **2008 Outstanding Thesis Award!**

Graduate Student Highlight: Lucinda O. Payne

All the clichés are true, living and working in another country will change your life. As a graduate student in the General/Experimental program, Lucinda Payne had the chance to work at Loughborough University in the United Kingdom for four months during the fall of 2007 with one of the top child feeding researchers. She benefited from a research-intensive atmosphere and exposure to new ideas and new ways to solve problems. Lucinda worked on several research projects while there, but she was primarily there to examine cultural differences in parental perceptions of child weight. She described a few challenging moments (learning to drive on the left side of the road), but for the most part she and her three children enjoyed living in a different culture and having a life-changing experience.



Sixteen Years of Excellence in Graduate Student Teaching

We are proud to announce the following graduate students who have been trained by Dr. Paul Fox and excelled in the area of teaching in our department. Each year the department makes a nomination and then the nominee submits a teaching portfolio to the graduate school for review. Despite the fact that every year our students compete with approximately 15 other students from the university, the Psychology Department has consistently been awarded the university's highest honor for excellence in teaching at the graduate level. The awardees have been complimented on their dedication to writing projects, fostering critical thinking skills, and overall enthusiasm in the classroom. Thanks for making us proud!

1993: Shelly Turlington

1994: Jeff Dyche

1995: Dawn Thomas

1997: Melissa Lakey

1998: Jody Krueger

1999: Nestor Lopez

2000: Megan Pinkston &
Chris Kennedy

2001: Alison Jenkins, Lisa Lively, Alma Scoby

2002: Bobby Hamby

2003: Krista Konrad & Haley Shilling

2004: Gustavo Araujo & Anne-Marie Suddreth

2005: Sara Keisler

2006: J Rudine

2007: Lucinda Payne & Jennifer Destefano

2008: Andrew Smith

Graduate Coordinator Spotlight : Dr. Denise Martz

Three years ago, the psychology department brought back the Graduate Coordinator position to our department with Denise Martz serving in this role. As "GC,"



Denise works closely with the four Program Directors and Paul Fox and serves as liaison to the Graduate School. Her first task in this role included getting the Graduate School to allow us to complete our theses in APA format, streamlining the process a bit for students and encouraging faculty and students to get more theses published. Moreover, she attends most thesis defenses and facilitates completion of a final product finished in precise APA format for approval at the Graduate School. Denise has linked the Clinical Health and I/O-HRM graduate programs to Academic Common Market that allows some of our southeastern out-of-state students to come to ASU at the in-state tuition rate. Denise oversees curriculum changes and she is currently very excited to be involved in the planning of a doctoral program within our department in rural Clinical Psychology.

Denise continues to enjoy mentoring students in research. Recent graduates Kate Tucker, Anni LeaShomb, and Lauren Britton published their thesis work on "fat talk" which has received lots of popular press from Allure magazine to the MSNBC website. Over the summer of 2007, Denise consulted with Ogilvy Worldwide, a public relations firm serving SlimFast™. She assisted them in designing a study called the "Psychology of Size" that was completed by 4000 subjects and was involved in multiple media events, including an appearance on NBC's Today Show with model/actress Rachel Hunter, publicizing these results. Currently, Denise and members of her research team are harvesting this data set for scientific publication. In fall 2007, Denise was awarded the Distinguished Graduate Faculty Award for her work with students and the GC role in the department. Because of this, Denise is pleased to be wearing some "bling" with her regalia nowadays as a function of the award!

Industrial-Organizational and Human Resource Management

Tim Huelsman, Program Director

One of the key strengths of the IOHRM program continues to be the excellent students it attracts. This year we welcomed another very talented group of 8, alumni of Charlestown University (WV), Clemson, Georgia Southern, UNC-Asheville, UNC-Charlotte, Penn State, Winthrop, and West Point. They join students from Auburn, Elmira College (NY), Elon University (NC), Florida State, Grove City College (PA), Pitt, UNC-Charlotte, and Virginia Tech. As you can see, the program is continuing to build its national reputation and is attracting students from across the country.



Pictured above: Dudley Commander, Dr. Tim Huelsman, and Kea Sherwood at SIOP in New York City last April.

As a part of the IOHRM program's effort to add valuable experience to their professional development, two students were nominated to participate in the Society for Industrial and Organizational Psychology's (SIOP) First Master's Student Consortium. In April 2007, Dudley Commander and Kea Sherwood traveled to New York City to meet with master's students from across the country. Modeled after SIOP's successful Doctoral Student Consortium, the Consortium is designed for students who are enrolled in master's programs in IO psychology. Last year's program included an impressive lineup of speakers who graduated from master's programs and have excelled as managers and consultants for some of the nation's most successful organizations: Microsoft, Coca-Cola, IBM, American Express, Personnel Decisions International, and Am-

gen. By design, the Consortium was limited to a small number of participants so that each student could interact with the speakers and with each other in two workshops, a Q&A roundtable, and a social hour. In April 2008, Appalachian's IOHRM program will be well-represented by current students Jessica Bowling and Andrew Smith at SIOP's 2nd Annual Master's Student Consortium.

Finally, the IOHRM program is happy to announce that Shawn Bergman will join the faculty of the Department of Psychology and the IOHRM program. He recently defended his dissertation at the University of Tennessee-Knoxville, which was entitled, "Person-organization fit perceptions and the job choice process: The impact of supplementary and complementary fit on attitudes, intentionism and job search behaviors." Look for a profile in the next alumni newsletter.

Faculty Research Highlight

Dr. Tim Ludwig took a scholarly leave from class responsibilities during the fall semester 2007. He used this release time to work on a couple of projects including a book on behavioral safety tentatively titled "Forward on all Fronts: Acting Strategically for Safety" and a book he is editing with Ramona Houmanfar (University of Nevada, Reno) tentatively titled "Behavioral Systems: Connecting Contingency to Culture for Performance Improvement". With the rest of his time Dr. Ludwig has engaged on a kind of international "speaking tour" of invited presentations over a 16 month period that included addresses, keynotes, and workshops in Florida, the United Kingdom, Kansas City, Portland, Reno, Michigan, Los Angeles, and Spain.



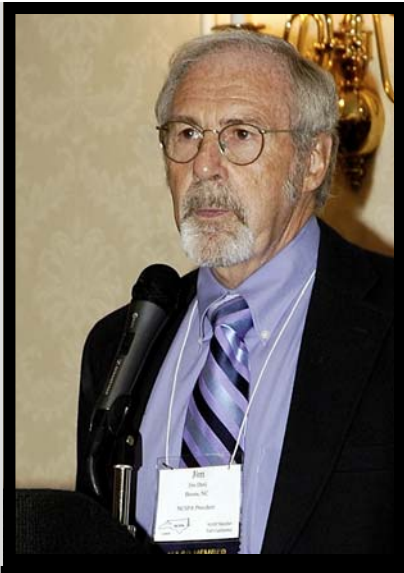
School, Pam Kidder-Ashley, Program Director

The School Psychology Program continued its tradition of recruiting excellent students with the class that enrolled in August 2007. Five of our new students are graduates of North Carolina schools, including UNC Chapel Hill, NC State, and Appalachian, and we also admitted students from schools in Michigan, Pennsylvania, Ohio, and Virginia. Now, having successfully weathered their first semester—which, once again, included the Group Initiative Course, the NCSPA Fall Conference, and the infamous Tests & Measurement exam—this new group has grown into a very compatible, supportive cohort. Our internship group has gone international this year, as we have one student placed in London. The schools in England operate quite differently from US schools, so her experiences have been fascinating

and enlightening, to say the least. We also have interns placed in Cheyenne, WY, and Nashville, TN, and in school districts literally all across North Carolina—from the Asheville area to Wilmington. Front row: Karen Marshburn, Ashley Dunn, Katie McDaniel Proffitt, Elizabeth Bissette; Middle row: Marissa Swaim, Bethany Keegan Dempsey, Nicole Perreault; Back row: Ashley McBride, Megan Tinker Hinshaw



Dr. Jim Deni receives NCSPA's President's Award



Jim Deni offers his remarks after receiving the NCSPA President's Award

In keeping with tradition, our entire program once again attended the annual conference of the North Carolina School Psychology Association in Wilmington in October. As always, the conference offered excellent workshops as well as opportunities to meet school psychologists from across the state. This conference was particularly special because one of our own—Dr. Jim Deni—presided over the proceedings and was honored at the membership luncheon for his many contributions to the association with the presentation of the NCSPA President's Award. The award was presented during the membership luncheon. Approximately 350 school psychologists and graduate students were in attendance, and they were witness to an inspiring introduction by Sarah Greene of Wake County Schools, the incoming president of NCSPA and a graduate of our program. Before presenting the award, Sarah reviewed Jim's many professional accomplishments (including election to 3 terms as NCSPA president and being one of just 6

recipients of NCSPA's Lifetime Achievement Award). She then asked everyone in the room who had ever taken a class with Jim to raise a hand, after which she asked everyone who had ever worked with Jim on a professional project or effort to raise a hand, and finally she asked that everyone who had been mentored by Jim to raise a hand. By that time the majority of people in the room had their hands raised. Jim received a standing ovation, and not a few tears were brushed from damp cheeks. I am certain that all of our alumni agree that few people in public service in North Carolina have been more influential than Jim Deni in fostering positive, statewide changes for our schools, and none has been more dedicated or passionate. —Dr. Pam Kidder-Ashley

International Opportunities

From mid-September until mid-December, 2005, Dr. Joan Woodworth led a group of 11 psychology majors in a study-abroad semester at Keele University in Staffordshire, UK. While there, she gave a presentation to the faculty and a workshop and presentation for the counseling students and faculty. Dr. Woodworth hopes that the exchange of students and faculty will become an annual event each fall. Although many departments offer cross-cultural opportunities for students, the Psychology Department has not had a strong history of providing these international experiences in the past. The Appalachian-Keele relationship is unique in that students attend the university and take classes from the accompanying Appalachian faculty and from Keele faculty in the same semester. It is also possible that Keele students and faculty will have the opportunity to spend a semester at Appalachian, but the nature of the U.K. university system makes the U.K. to U.S. exchange more challenging. Dr. Woodworth made many friends while there and three Keele faculty members have already made short visits to Appalachian. In the fall of 2009, Dr. Kurt Michael will be the next Appalachian faculty to travel with a group of our students and to teach at Keele.



Farewell to Dr. Rich Nagle!

Boy doesn't time fly when you're having fun? It's hard to believe that Dr. Rich Nagle's two-year stint in our department is nearly over. In the last newsletter, we introduced Dr. Rich Nagle, who is our much-esteemed endowed chair. The Kulnych-Cline Endowed chair serves to bring prominent academics to our department for a period of 1-3 years. For the past two years he has lived in Boone during the week and then returned to Columbia, SC, to be with his wife, Pat, for most weekends. He has enlivened our department with his congenial personality and his love for teaching and research. He has also helped guide the department with our decision to pursue a doctoral program.



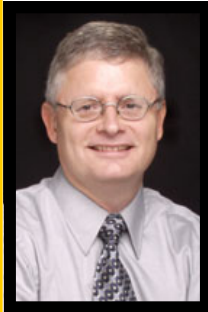
Next year he will return to Columbia and will be involved in a number of organizational development projects. He will continue his work as clinical director at Pine Grove, a residential facility for children with autism. Dr. Nagle plans to begin a new book on the assessment and treatment of children with autism. In addition, he will be involved in charitable fundraising for Harvest Hope Foodbank and the South Carolina Autism Society. He also plans to spend lots of time with his new grandson to arrive in July!!

I am done with great things and big things, great institutions and big success, and I am for those tiny invisible molecular moral forces that work from individual to individual, creeping through the crannies of the world like so many rootlets, or like the capillary oozing of water, yet which if you give them time, will rend the hardest monuments of man's pride. —William James

Alumni Spotlight

Michael Allen

Michael Allen received his master's degree in clinical psychology from Appalachian State in 1974 and he has been chair of the psychology department at the University of Mississippi since 2002. He expressed having fond memories of ASU: going to football games and working with Paul Fox, who was his thesis chair. After receiving his master's degree, Dr. Allen worked as a clinician at the Blue Ridge Counseling and Mental Health Center in Asheville, NC. He then continued his doctoral studies at the University of Tennessee, Knoxville in experimental psychology with an emphasis in psychophysiology, receiving a degree in 1982. He completed two postdoctoral fellowships at UNC-Chapel Hill and Pittsburgh. Dr. Allen is married and has three sons. His wife is a kindergarten teacher at an on-campus early childhood center. His sons are grown and pursuing their own careers. One works as a geographic information systems analyst in New Orleans, one is in graduate school at the University of Florida, and one is in film school at the University of New Orleans.



We would like to acknowledge and thank the following people who have made substantial financial contributions to our department.

Ms. Cassie Rutherford Campbell

Dr. & Mrs. Don Clark

Mr. Pete Kulnych and daughter Ms. Cline

Mr & Mrs Adam Desautels

Dr. Gary Hazlett

Dr. James & Mrs. Tammy Hebert

Mr. Davis Hebert

Dr. Joseph Moore

Mr. & Mrs. Grady Moretz

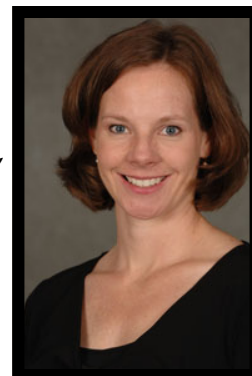
Dr. Jane Rawson

Henry & Beth Stamm



Appalachian Outstanding Alumni Award: Dr. Kristi Graves

After graduating from ASU, Kristi completed a doctoral program in clinical health psychology at Virginia Tech and an internship experience at the Medical University of South Carolina. She received clinical training in the treatment of cancer patients. Kristi secured a three-year post-doctoral fellowship working in psycho-oncology. Specifically, Kristi compared the effectiveness of social cognitive interventions to expressive writing interventions on cancer patient's quality of life and medical outcome. Kristi is now a full-time research scientist serving as the Project Director for two federally funded studies at the Lombardi Comprehensive Cancer Center affiliated with Georgetown University in Washington, DC. She continues to provide invaluable clinical care to a variety of cancer patients. In particular, Kristi is interested in the ethical issues and behavioral sequela related to genetic testing for the breast cancer genes. She is on her way to becoming an internationally known researcher in the field of psychosocial oncology.

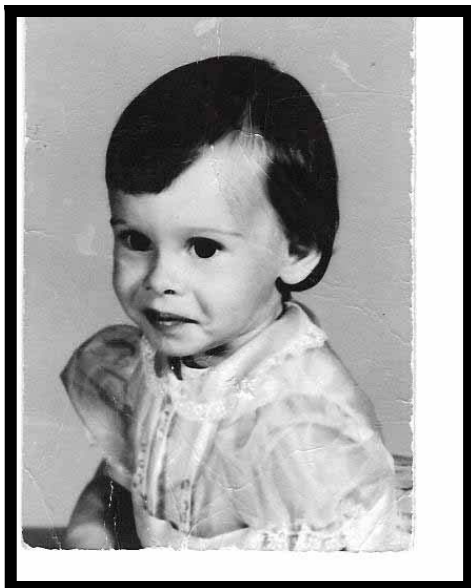


(Continued from page 1)

Memorial Fellowship was established in support of a needy Clinical-Health Psychology major. Please click on the "Donations" section of the web page to determine how you might contribute to your favorite psychology department. Your support has provided new student desks in our classrooms this year.

The big news is that we are well on our way in our quest for a doctoral program in Rural Clinical Psychology. If approved by the Board of Governors (a multi-step process), we hope to have our first class in the fall of 2010. The new Institute for Health and Human Services will open its doors at University Hall in the fall. The Institute, featuring our Psychology Clinic, will provide work and supervised training (practica and internships) opportunities for our students as well as service to the community through collaboration with Watauga Hospital, community mental health agencies, the new nursing program, communication disorders, and several other ASU departments. Aren't you just busting at your seams to support a doctoral intern or practicum student?

As we bade farewell to Mrs. Nadine White (office manager) in the last *Newsletter*, we



welcome Mrs. Carol Anderson as her capable replacement. Dr. Rich Nagle (featured in the last *Newsletter*) will have completed his two year stint as our Distinguished Visiting Professor. His council has been very valuable relative to the initiation of our Ph.D. pursuit. He will be replaced by Dr. Scotty Hargrove (retiring from Ole Miss) who has been instrumental in the establishment of several doctoral programs in rural clinical psychology. We will also have two new faculty joining us in the fall: Dr. Lisa Emery (Developmental Psychology) & Dr. Shawn Bergman (IO/HRM).

The five years I have served as chair has flown by. We are now in the process of searching for my replacement. I shall continue to teach and relax in my new office on the third floor (tried to have a Jacuzzi installed, but got caught). Keep sending the emails. I will continue to enjoy and post them.

- Paul Fox



Recently members of Psi Chi sponsored a contest to guess faculty baby pictures. They posted the baby pictures of all faculty members without identifying them and asked students to label them correctly. The most frequently identified baby picture was that of our beloved General/Experimental faculty member, Mary Ballard (shown left). Another favorite was that of our fearless leader, Dr. Paul Fox (shown above). Students and faculty alike enjoyed crowding around the bulletin board to see the adorable photographs.